

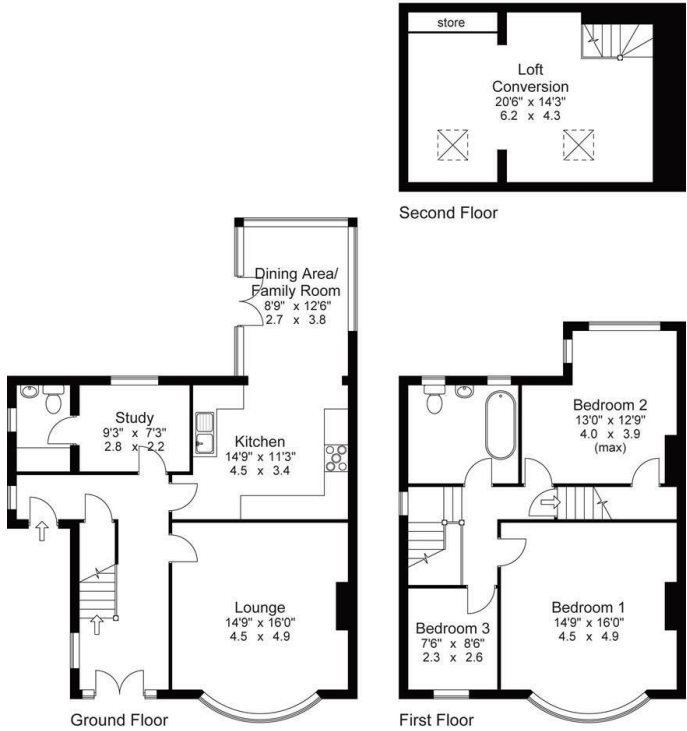


26 Rothwell Road, Halifax, West Yorkshire, HX1 2HA

Offers In Excess Of £350,000

- : Extremely Convenient & Sought After Location
- : Downstairs Cloakroom/Utility Room
- : 3 Bedrooms Plus Loft Conversion
- : Viewing eSential
- : Attractive Family Home
- : Study
- : Gardens & Garage
- : Superior Spacious Semi Detached Residence
- : Open Plan Kitchen Dining Area & Family Room
- : easy Access to Halifax Town Centre

Approx Gross Floor Area = 1666 Sq. Feet  
= 154.8 Sq. Metres



For illustrative purposes only. Not to scale.

Directions

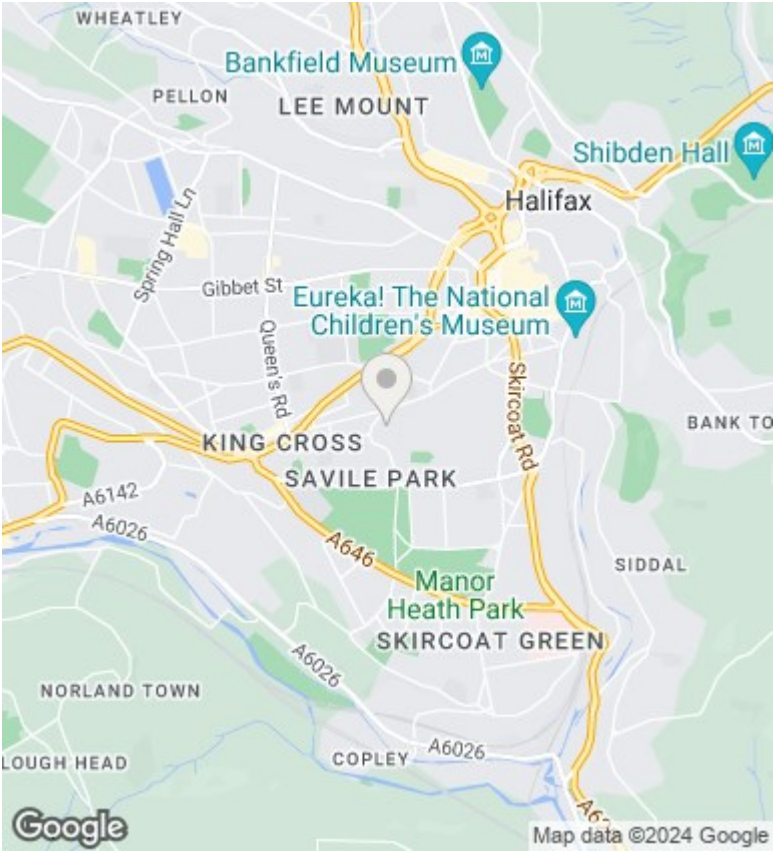
Viewings

Viewings by arrangement only. Call 01422 349222 to make an appointment.

Council Tax Band

C

EPC Rating:



Energy Efficiency Rating		
	Current	Potential
Very energy efficient - lower running costs		
(92 plus) A		
(81-91) B		
(69-80) C		
(55-68) D		
(39-54) E		
(21-38) F		
(1-20) G		
Not energy efficient - higher running costs		
England & Wales	EU Directive 2002/91/EC	